

Laboratory of Electrical Engineering and Automation



Génie Maritime et Portuaire



Laboratory of Energy Engineering



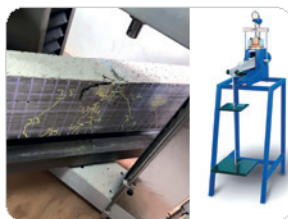
Laboratory of Automotive and Mechatronic Engineering



Laboratory of Mechanical Engineering



Laboratory of Civil Engineering



Laboratory of computer and Telecommunication Engineering



Laboratory of Physics



Laboratory of Process Engineering



Laboratory of Quality, Hygiene, Safety and Environmental Engineering



EXAMINATION CENTERS

Bamenda - Bandjoun - Bertoua - Buéa - Douala - Ebolowa - Garoua - Maroua - Ngaoundéré - Yaoundé

APPLICATION FILE

- 1- An individual registration form to be completed online at www.enspd-udo.cm. The completed form shall be printed bearing a fiscal stamp of 1 000 francs CFA and signed by the candidate;
- 2- A certified true photocopy of birth certificate not older than three months;
- 3- A certified true photocopy of " Baccalaureate or GCE-A/L certificate or slip for the sciences subjects or equivalent certificate, or the success testimonial of any of these certificates as the case maybe;
- 4- A certified true photocopy of "Probatoire" or GCE O/L certificates or result slips;
- 5- A medical certificate of fitness not older than three months issued by a state medical practitioner testifying that the candidate is fit for Higher Education;
- 6- An A4 format self-addressed envelope bearing a 1000 francs CFA postal stamp with candidate's address on it.
- 7- Reçu des frais d'inscription au concours qui s'élèvent à 20.000 FCFA pour les 1^{ère} année et 30.000 FCFA pour les 3^{ème} année.
Payable à UBA Compte n° 0 100 500 000 287 de l'ENSPD

PROCESSUS D'INSCRIPTION EN LIGNE AU CONCOURS D'ENTREE A L'ENSPD 2022

Etape 1 : PREALABLE

- Payer les frais de concours dans le compte UBA N° 0 100 500 000 287 ou Express Union pour les villes sans agence UBA (N.B : Payer avec le nom du candidat) ;
- Scanner le reçu au format png ou jpg.

Etape 2 : INSCRIPTION

- Se rendre sur le lien concours.enspd-udo.cm ;
- Ou passer par le site web enspd-udo.cm et ensuite aller sur le menu Concours Inscription ,
- Remplir le formulaire et valider ;
- Attendre le sms confirmant votre inscription en ligne et passer à l'étape N° 3 avec le numéro d'inscription.

Etape 3 : TELECHARGER LA FICHE D'INSCRIPTION

- Se connecter sur concours.enspd-udo.cm ;
- Télécharger votre fiche d'inscription.

Etape 4 : COMPLETER VOTRE DOSSIER PHYSIQUE AVEC LES PIECES INDIQUEES DANS L'ARRETE DU CONCOURS ET ALLER DEPOSER DANS UN CENTRE DE DEPOT AGREE.



USEFUL CONTACTS :

697 542 240 / 693 952 569 / 694 219 697 / 695 734 150 / 699 969 243

REPUBLIQUE DU CAMEROUN
PAIX-TRAVAIL-PATRIE

REPUBLIC OF CAMEROON
PEACE - WORK - FATHERLAND

MINISTRY OF HIGHER EDUCATION
MINISTRE DE L'ENSEIGNEMENT SUPERIEUR

THE UNIVERSITY OF DOUALA
UNIVERSITE DE DOUALA



NATIONAL HIGHER
POLYTECHNIC SCHOOL
OF DOUALA "NHPSD"

ECOLE NATIONALE
SUPERIEURE POLYTECHNIQUE
DE DOUALA "ENSPD"

Tel. : +237 697 542 240 • P.O Box : 2701-Douala, Campus Pk. 17
Email : contact@enspd-udo.cm • Website : www.enspd-udo.cm

TRAINING AREAS

Engineering Science and Technology

GRADUATE STUDIES

1- Engineering and Technology program

Integrated preparatory cycle (02 years)
Master of Engineering (03 years)

2- Science of Engineer Program

Bachelor of Science in Engineering (03 years)
Master of Science in Engineering (02 years)
Doctorate of Philosophy (03 years)

PROGRAM

1- Initial Program

Normal daily Sessions

2- Professional Program

Afternoon Sessions
Alternately

PROSPECT

- Manufacturing Industries
- Energy and Services
- Sustainable Development

EMPLOYMENT OPPORTUNITIES

- Companies
- Design and analysis offices
- Research
- Teaching and training
- Public administration
- Entrepreneurship

TUITION FEES

Engineer - Bachelor - MSc with thesis and Doctorate programs : **50.000 FCFA** tuition fees.

PROFESSIONAL MASTER : From **800. 000 FCFA**

SPECIAL TRAINING : Negotiable

DOCTORATE STUDIES IN ENGINEERING SCIENCES AT UDO-UFD

E3M Laboratory

Energy, Materials, Modelling and Methods

CURRICULUM DETAILS BY DEPARTMENT

ENGINEERING STUDIES

1- Civil Engineering

- Industrial building and Construction (IBC)
- Public Works and structures (PWS)

2- Energy Engineering

- Engineering of Production and Control of Energy (EPCE)
- Refrigeration and Climate Engineering (RCE)

3- Automotive and Mechatronic Engineering

- Mechatronic Systems Engineering (MSE)
- Automotive Engineering (AE)

4- Mechanical Engineering

- Mechanical and Manufacturing Construction (MMC)
- Metal Construction and Piping (MCP)

5- Electrical Engineering and automation

- Electrical Energy Engineering (EEE)
- Automated Systems Engineering (ASE)

6- Process Engineering

- Industrial chemistry (IC)
- Industrial bioprocesses (IB)
- Pharmaceutical Engineering (PE)

7- Computer and Telecommunications Engineering

- Networks and Telecommunications (NT)
- Software engineering (SE)
- Information Systems Security (ISS)
- Information system management (ISM)

8- Quality Engineering, Hygiene, Safety and Industrial Environment

- Quality and Standardization (QS)
- Industrial hygiene (IH)
- Industrial Security (IS)
- Industrial environment (IE)

9- Maritime and Port Engineering

- Operations Engineering-Fishing Captain (OE-FC)
- Naval Electromechanics (NE)

10- Génie Physique et Technologie Biomedical

- Sensors, Instrumentation and Measurements (SIM)
- Biomedical Technology (BT)

ENGINEERING SCIENCES COURSE

- 1- Mechanics and Materials
- 2- Geophysics, Water and Environment
- 3- Electronics, Electrical Engineering, Automation and Telecommunications
- 4- Energy
- 5- Applied Chemistry
- 6- Data Science and Artificial Intelligence

PROFESSIONAL MASTERS

- 1- Hydrocarbons and Sustainable Development
- 2- Geotechnics and Infrastructures
- 3- Metal Construction and Industrial Mechanics
- 4- Thermal and Energy Engineering
- 5- Computer Engineering, Software Engineering option
- 6- Mechatronics and Technical Equipment Management

ADMISSION

➤ *By competitive exam*

ENGINEERING, ENGINEERING SCIENCES AND METEOROLOGY COURSES

First year entrance

Baccalaureate C, D, E, F, IT / GCE-AL in Pure Mathematics, Physics and Applied Mathematics or Chemistry or any other diploma deemed equivalent by the Ministry of Higher Education.

Entrée en troisième année

Licence Scientifique / Licence Professionnelle et BTS dans la spécialité / Licence Technologique / DUT Scientifique / DEUG Scientifique. Tout autre diplôme jugé équivalent par le Ministère de l'Enseignement Supérieur

➤ *By way of Transfer*

Concerned are students enrolled in the engineering program in the third year and fifth year

➤ *On file study*

This modality concerns candidates for professional program. Diploma required for the corresponding specialty / certificate of validation of prior experience.

➤ *Call for applications*

- Master research with thesis' diploma in the corresponding specialty.